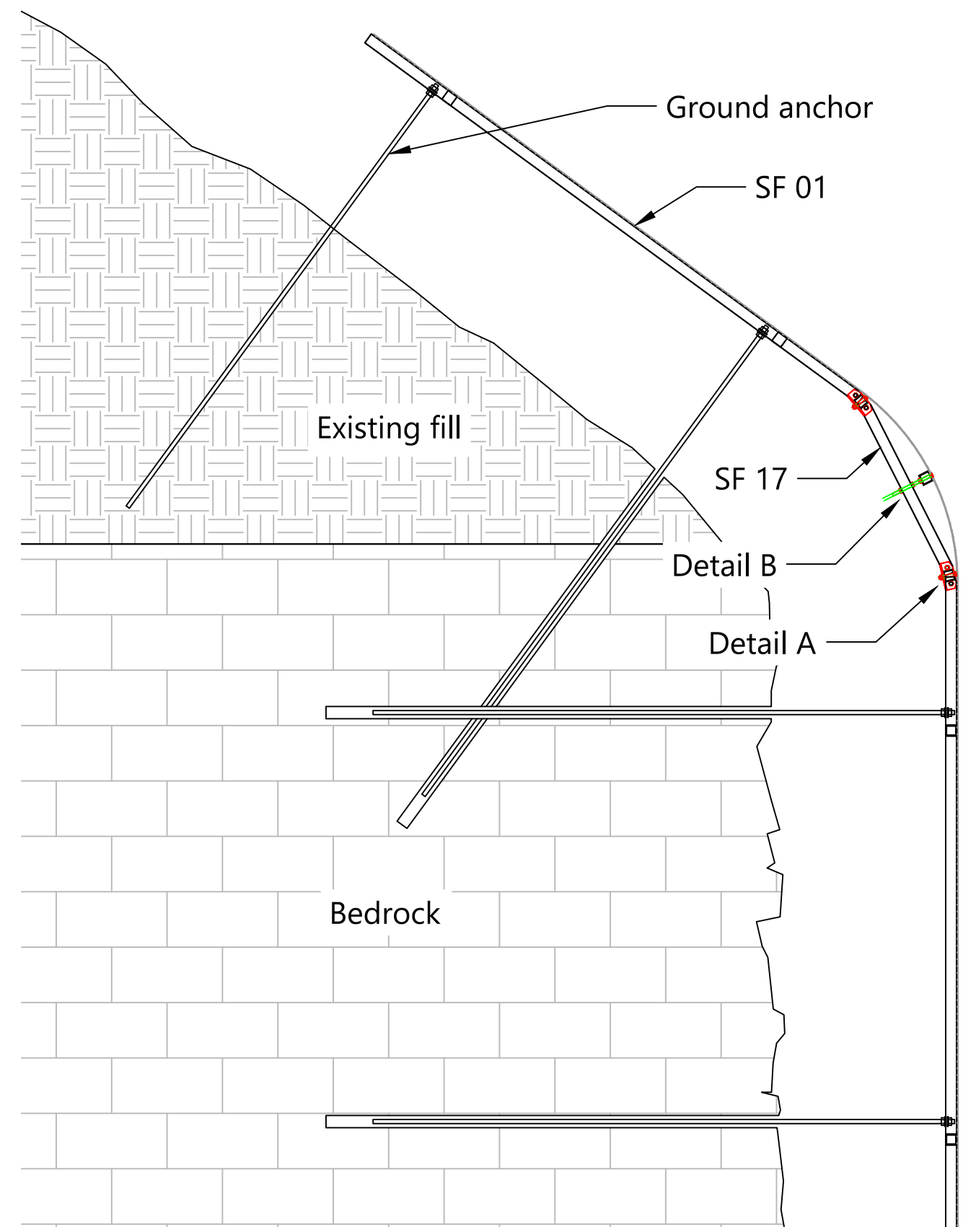
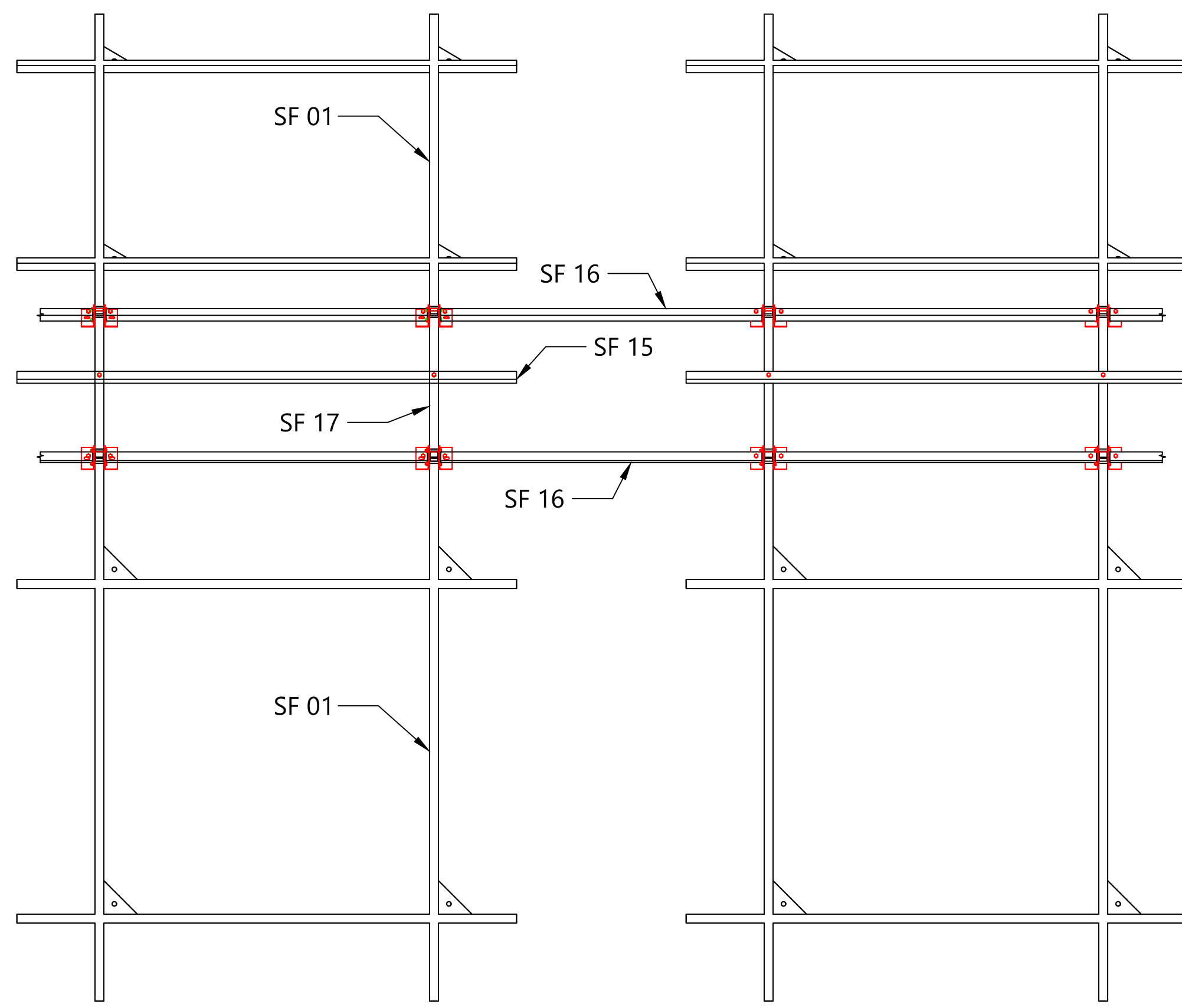


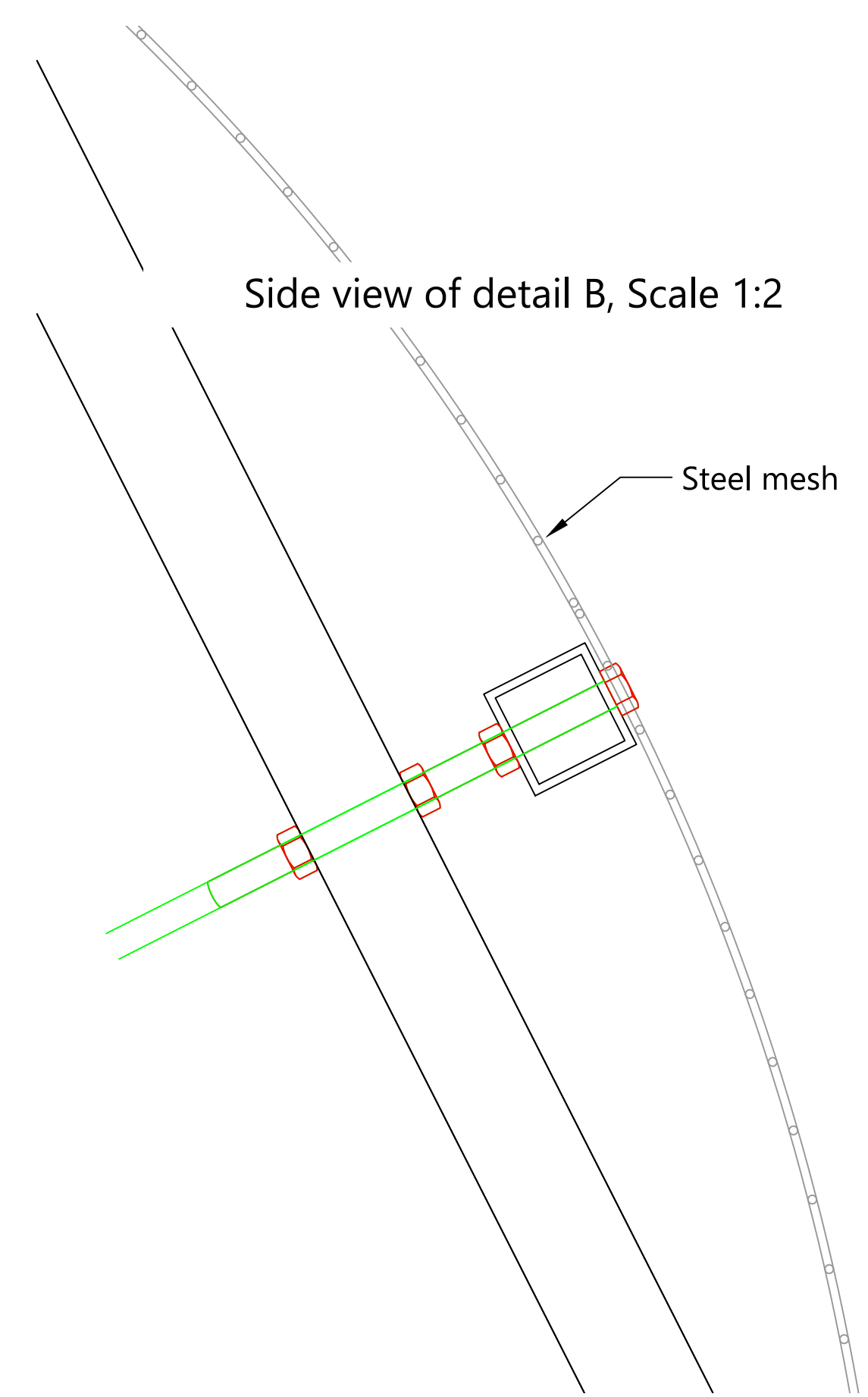
Sloping support frame detail,
Scale 1:20



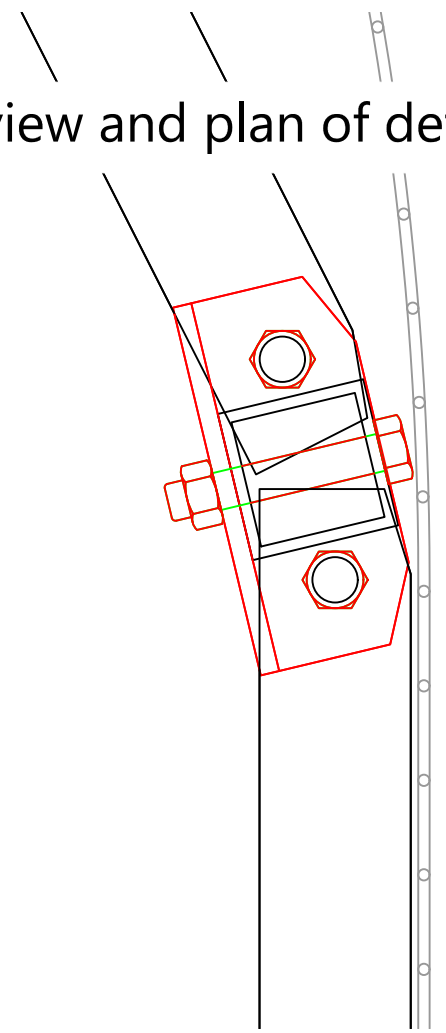
Sloping support frame detail,
Scale 1:20



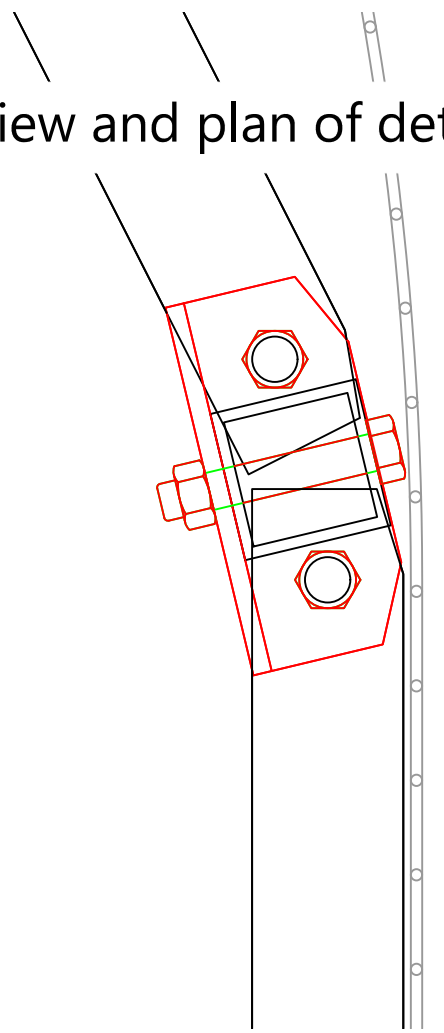
Side view of detail B, Scale 1:2



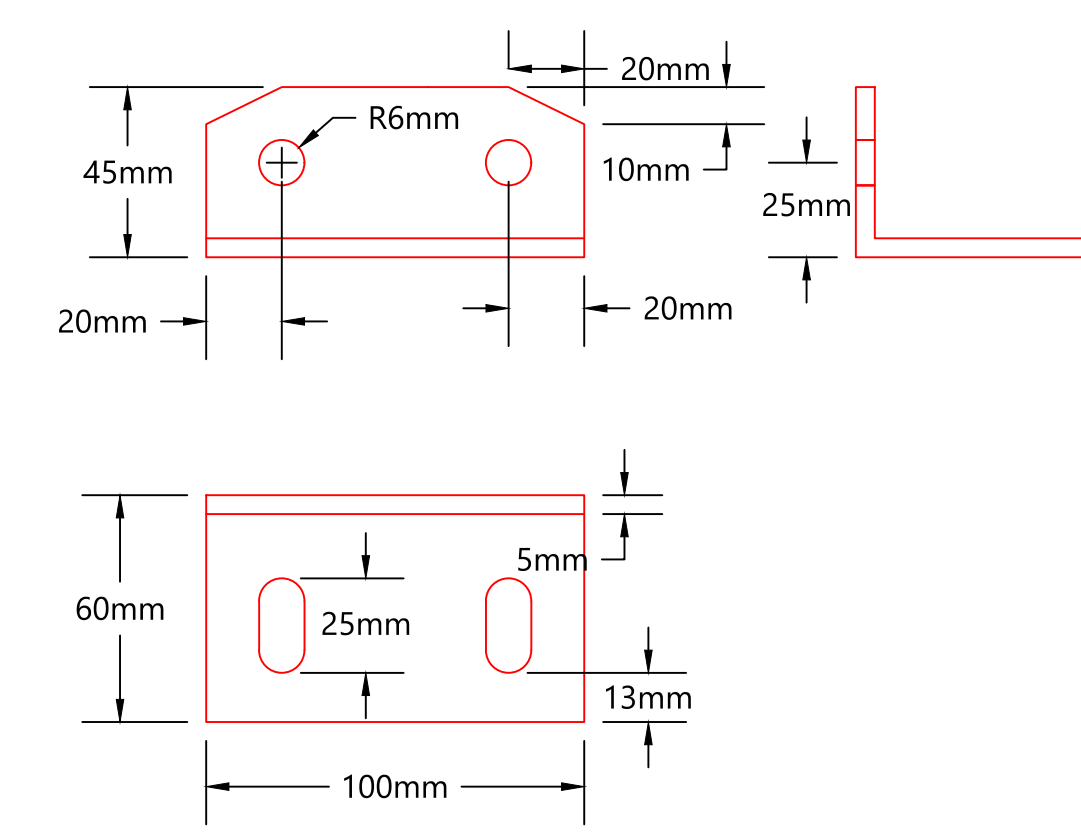
Side view and plan of detail A, Scale 1:2



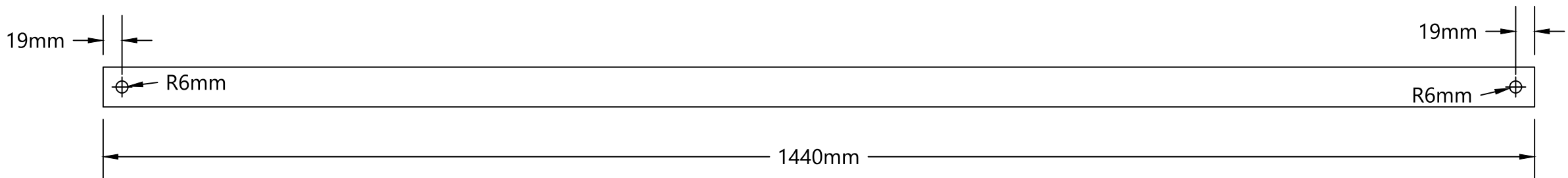
Side view and plan of detail A, Scale 1:2



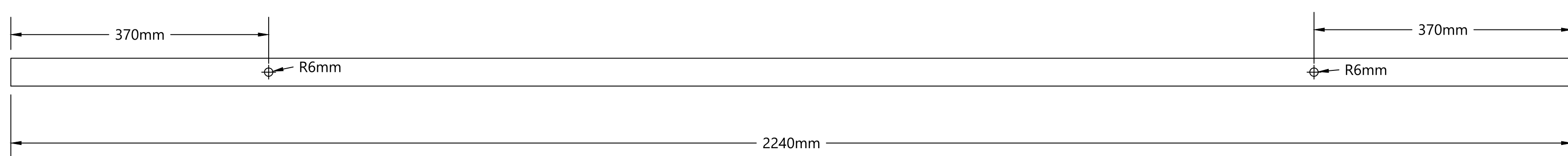
SF 18 Connecting bracket, Scale 1:2



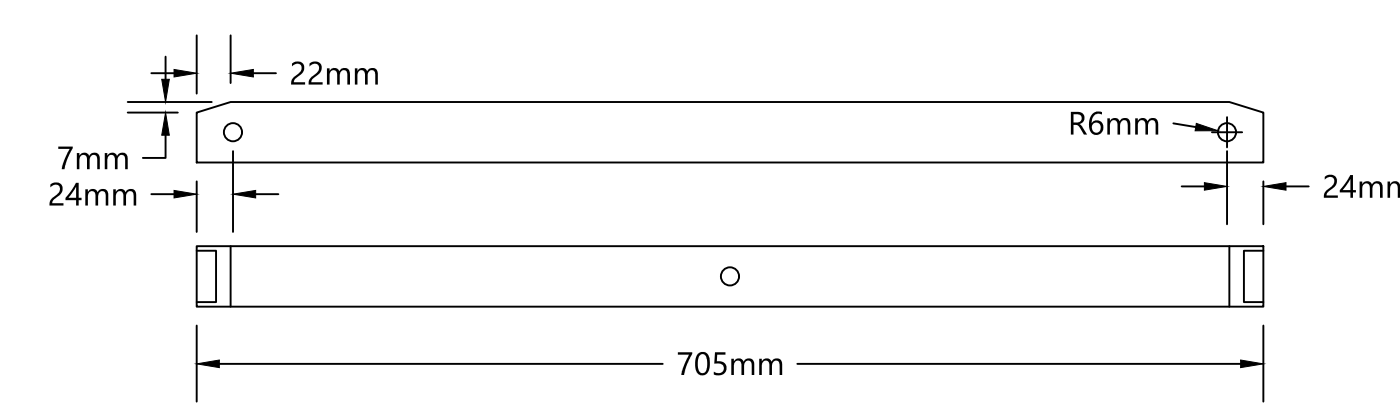
SF15 Horizontal bar, Scale 1:5



SF16 Horizontal bar, Scale 1:5



SF 17 Vertical bar, Scale 1:5



This design is subject to final approval.

Drawings should be read in conjunction with the conceptual design statement report which presents full and detailed specifications.

The support frame sections are prefabricated from 40mm x 40mm x 3mm thick mild steel box section and of welded construction. The connectors are formed from 50mm x 50mm x 3mm thick mild steel box section. All connection holes to drilled prior to galvanizing.

Support frame base and sub units are based on the standard support frame unit, see drawing 30499/WSM/SW/17



PROJECT TITLE

Construction of a Steep Wall
Non-Hazardous Waste Cell

PROJECT NUMBER

30499

CLIENT

Wasteserv Malta Ltd.

LOCATION

Maghtab Environmental Complex

DRAWING TITLE

Sloping Support Frame Units And
Connectors

REVISIONS

Rev	Date	Chkd	Description
0	16/08/2021	DB	First Issue

DESIGNED	RWS	DRAWN	RWS
SCALES @ A1	As Shown	DATE	16/08/2021



DRAWING NUMBER	REV
30499/WSM/SW/24	00